



Plastic Tarpaulin, Eco Design

ICRC/IFRC/UNHCR Standard



Circularity Design



Fire retardant



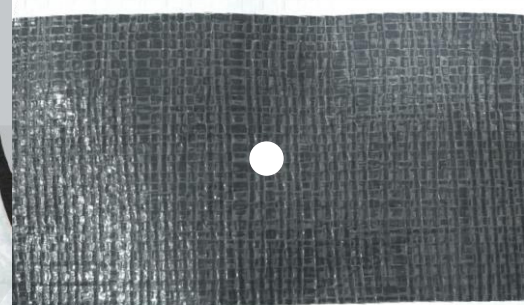
Waterproof



UV stabilised



Logo customisable



› Key Features

- › Eco-conscious reinforced tarpaulin. Developed in accordance with the ICRC/IFRC/UNHCR Eco-Design Tarpaulin Project 2021-2023.
- › Part of our Eco-Product line, designed with principles of sustainable manufacturing, energy and water efficiency, responsible material selection, and reduced environmental impact.
- › Contains up to 15% recycled PE, maintaining full strength and lifespan, 100% recyclable.
- › Reduces CO₂ emissions due to the recycled plastic ratio and lighter weight.

› Dimensions and Weight

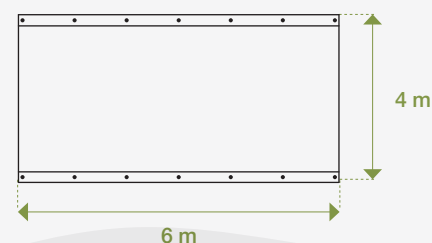
Width and length

Size / sheet	4 x 6 m ±1%
Size / roll	4 x 60 m ±1% customised size: width 4 m ±1%, length customised
Specific sheet weight without band	170 ±10 g under ISO 3801 (equivalent to min 160 to 180 g/m ² max)
Complete sheet weight with bands	Plain sheet specific weight plus 4% additional weight (approx.) for reinforcement bands under ISO 3801
Total weight	From min 166 to 188 g/m ² Specific weight of bands from min 150 to 200 g/m ² max

› Technical Specifications

Material for the tarpaulin	› Woven HDPE black fibres fabric, double-side LDPE white coating, reinforced with 2 bands of 75 ±4 mm width woven black HDPE with minimum 15% post-consumer recycled content
Reinforced fixation point	› Seven holes of 8 ±1 mm on the bands at 1 m ±5% intervals, punched through the band and tarpaulin › Flame retardant EN13823+A1
Tensile strength	Min 750N, 15-35% elongation in warp and weft in plain sheet under ISO 1421-1

› Graphic Reference



Plastic Tarpaulin, Eco Design

ICRC/IFRC/UNHCR Standard



UV resistance	After 1,500 hours UV under ASTM G53/94 (UVB 313 nm peak) Maximum 5% loss of strength compared to the original tensile strength of the product
Tensile strength in the fixation point	Min 900N as per ISO 1421-1, pulling perpendicular to the tarpaulin edge (fixation points) with a hook of 8 mm wire diameter. Test 3 pieces of 200 mm x 500 mm from each side of the tarpaulin
Welding	Only one is allowed, lengthwise. The tarpaulin tensile strength crossways at the place of welding under ISO 1421-1 minimum 50% of original value of the actual product

› Packing and Shipping - 4 x 6 m

Packing Attributes	Unpalletised	CRI Pallets	Euro-2 Pallets
Content	5 pieces	18 bales (90 pieces)	24 bales (120 pieces)
Package dimensions	60 x 50 x 20 cm ±20% (w/o pallets)	77 x 56 x 14 cm ± 20% (bale) 113 x 77 x 115 cm ± 20% (pallet)	60 x 50 x 20 cm ± 20% (bale) 120 x 100 x 130 cm ± 20% (pallet)
Package weight	22.7 kg ±10%	420 kg ±10%	550 kg ±10%
Package volume	0.06 m³ ±20%	1.00 m³ ±20%	1.56 m³ ±20%

› Estimated Loadability¹

Containers	Unpalletised	CRI Pallets	Euro-2 Pallets
20' GP	550 bales (2,750 pieces)	28 pallets (2,520 pieces)	N/A
40' DC	1,150 bales (5,750 pieces)	60 pallets (5,400 pieces)	N/A
40' HC	1,240 bales (6,200 pieces)	60 pallets (5,400 pieces)	42 pallets (5,040 pieces)

› Packing and Shipping - 4 x 60 m Roll

Packing Attributes	Unpalletised	CRI Pallets	Euro-2 Pallets
Content	1 roll	8 bales (8 rolls)	12 bales (12 rolls)
Package dimensions	77 x 56 x 25 cm ±20%	113 x 77 x 115 cm ±20%	100 x 60 x 20 cm ±20% (bale) 120 x 100 x 130 cm ±20% (pallet)
Package weight	45 kg ±10%	372 kg ±10%	550 kg ±10%
Package volume	0.108 m³ ±20%	1.00 m³ ±20%	1.56 m³ ±20%

› Estimated Loadability¹

Containers	Unpalletised	CRI Pallets	Euro-2 Pallets
20' GP	300 bales (300 rolls)	28 pallets (224 rolls)	N/A
40' DC	600 bales (600 rolls)	60 pallets (480 rolls)	N/A
40' HC	620 bales (620 rolls)	60 pallets (480 rolls)	42 pallets (504 rolls)

¹ The loadability provided is based on the maximum volume and weight capacity of the containers. This might change due to road weight restrictions in the country of destination. Please contact our sales team for further clarifications.